

35. Ryhov

The park environment around Ryhov is exciting. There are 450 protected trees: avenues, very large trees and old hollow trees.



The parks and nature areas of the Ryhov County Hospital in the middle of Jönköping and the nearby shoreline av Lake Rocksjön, are altogether a big green area for people to use.

The city park and pine woods southwards to Hovslätt are important areas for the red-listed longhorned beetle *Nothorhina muricata*. Some of the pine trees at Ryhov are almost 300 years old and the woodland has existed at least since the 17th century. These monumental pine trees are part of the natural environment close to the county hospital, and there is an exciting nature and culture path around the hospital area. The sandy pine tree

environment contrasts sharply with the wetland at Rocksjön which is on the other side of the motorway.

We find two different pine tree environments around Ryhov. On the one hand a real pine wood in the south with stately pine trees, and also solitary, stubby pine trees out in the park environment. The pine wood has a luxuriant shrub vegetation of maple, willow, oak and birch. Pine trees which are exposed to the sun at roads and the edges of clumps of trees on the southern side are most interesting as a habitat for the longhorned beetle. The area is managed to benefit these pine trees. Ryhov is one of the most

important areas for this red-listed beetle in the municipality and the county, and also for other small creatures associated with pine trees exposed to sunlight. The larvae develop in the thick, fissured bark of very old, living, sunlit pine trees.

Between Ryhov and the A6 Centre is a different environment, a brook which runs through a ravine. Sometimes the water flow here is considerable, as a large area is drained. Here are interesting plants such as the ostrich fern which requires a damp habitat, and herbaceous plants such as lungwort. On the edges of the ravine are very old pine trees which recently



WORTH KNOWING

The nature and culture path “Slingan” (The Loop) was constructed by the County Council in cooperation with the municipality and the County Museum. The path is 3.5 km long, and goes around the entire Ryhov through natural areas and park environment. You can go wherever you like or complete the entire circuit. There are information signs along the path. At the main entrance to the county hospital is an explanatory sign showing the nature and cultural path.

HOW TO GET THERE: Drive or cycle to the Ryhov hospital area in central Jönköping.

Parking: At Ryhov or the A6 area.

BUS: Bus to Ryhov/Råslätt, bus stop Shell A6 or Ryhov södra infarten (southern access road).

DIFFICULTY: ● Easy

have been given more sunlight as deciduous trees have been removed.

Animals found at Ryhov are the badger which has at least one large set in the area, roe deer, the tawny owl which likes a thick woodland environment, and squirrels and hares.

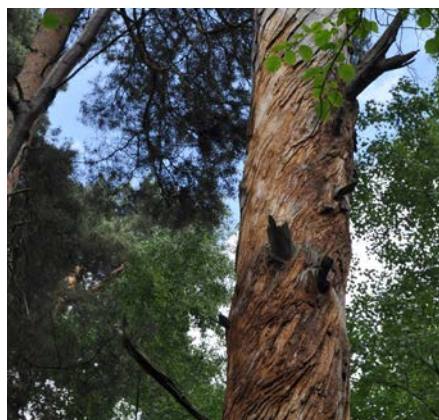
There is a rich 500-year history in the area. The Ryhovs herrgård manor with its farm, A6 military history, the mental hospital history with a museum and construction of the hospital area which commenced in the 1930s are part of this history. Ryhov’s manor park comprises the manor buildings facing the Rocksjön lake and the E4 road and extends eastwards to the buildings facing the shopping centre.



Badger



Longhorned beetle



Hatching hole of longhorned beetle in an old pine tree